

# Modelling Local and Systemic Toxicity: Incorporation of *In Silico* Predictions in the Development of Adverse Outcome Pathways

**Judith Madden**

QSAR and Modelling Group

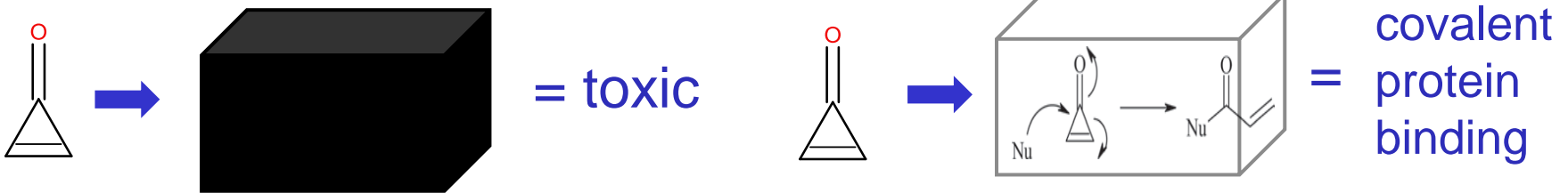


# *In Silico* Prediction

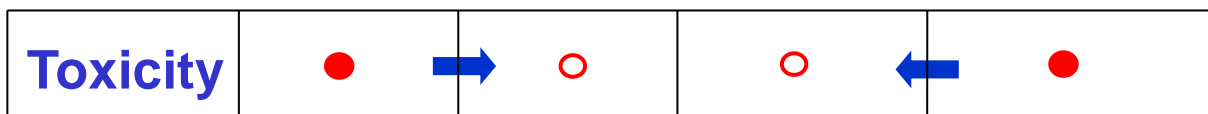
- Activity (e.g. toxicity) of a chemical  $\propto$  Molecular (structural) properties

- Certain endpoints easier to predict than others

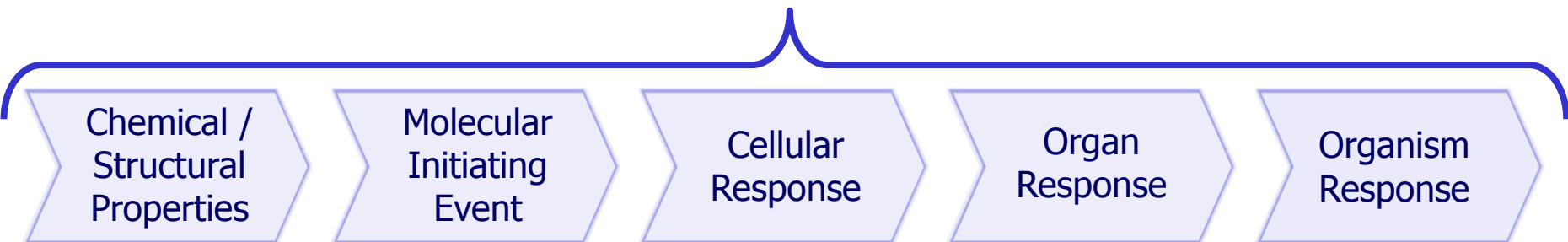
- Methods need to be transparent



- Newer methods such as category formation (**grouping**) & read-across can be applied to complex endpoints & are transparent

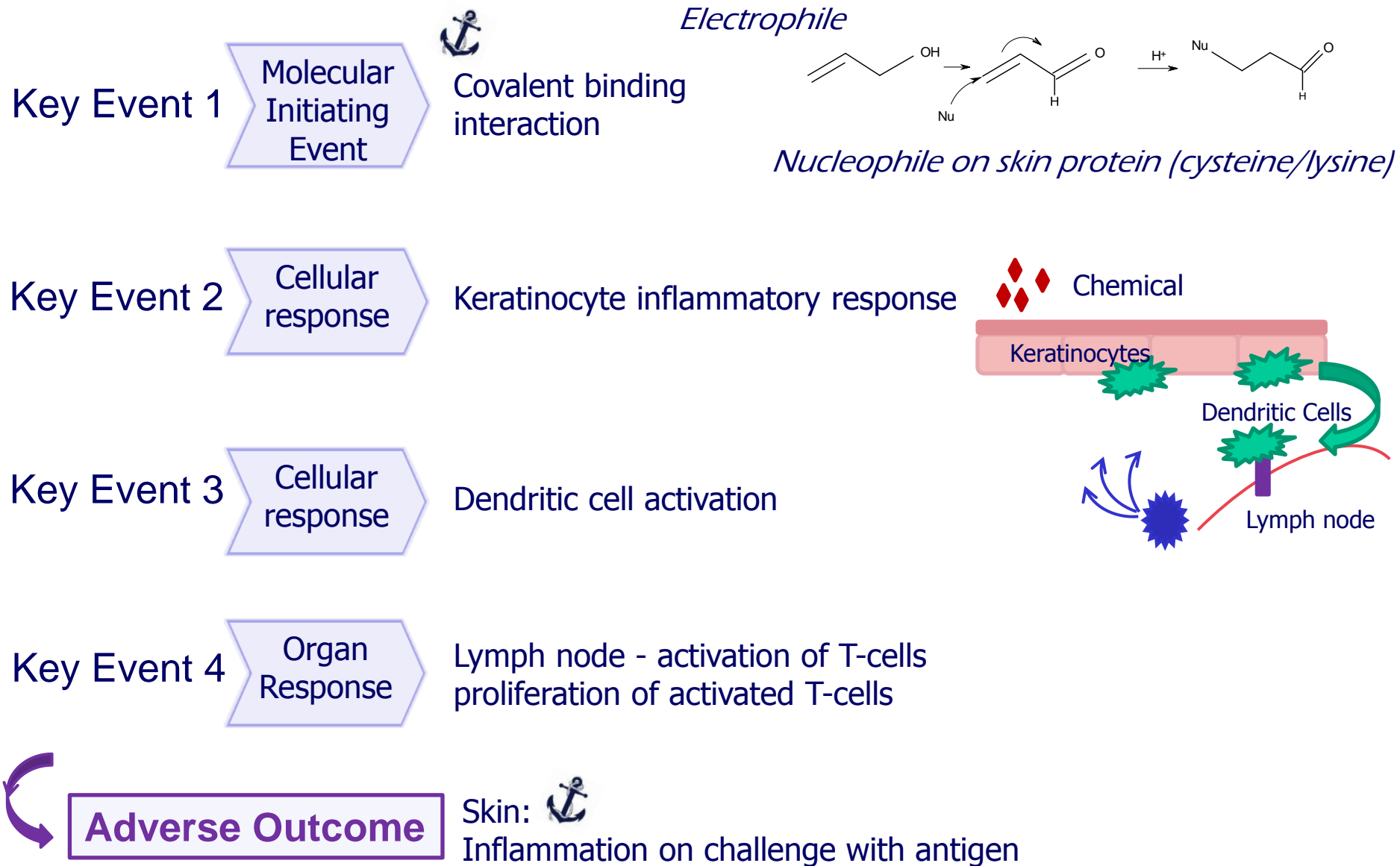


# Adverse Outcome Pathway for Skin Sensitisation



- The AOP provides a method to represent the **Key Events** involved
  - **Key Events** are measurable and toxicologically relevant
- 
- NB pathway may be non-linear; adaptive & regulatory responses may be involved
  - Realistic exposure scenario need to be considered

# Key Events in Skin Sensitisation AOP



# Key Events in Skin Sensitisation

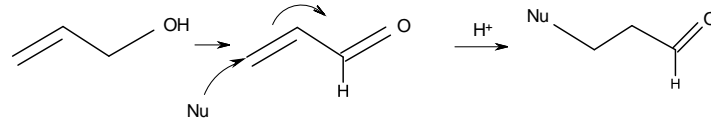
Key Event 1

Molecular Initiating Event



Covalent binding interaction

*Electrophile*

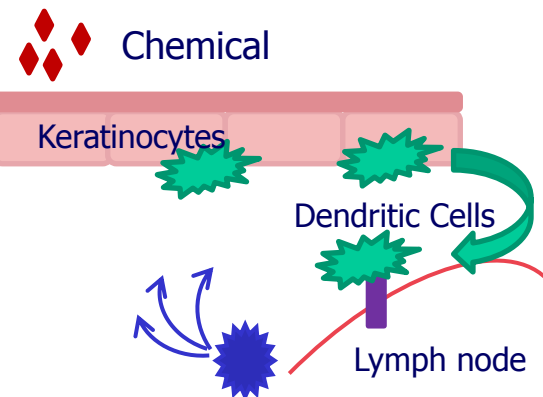


*Nucleophile on skin protein (cysteine/lysine)*

Key Event 2

Cellular response

Keratinocyte inflammatory response



Key Event 3

Cellular response

Dendritic cell activation

Key Event 4

Organ Response

Lymph node - activation of T-cells  
proliferation of activated T-cells

Adverse Outcome

Skin:

Inflammation on challenge with antigen

## Accumulating Information to Develop AOPs

- The Molecular Initiating Event (MIE) (initial interaction between chemical and biological system) is a **Key Event**
  - Hypothesis or evidence required for Key Events
  - Evidence can be accumulated from a range of sources

### *In Silico*

Creating  
Structural Alerts  
/ Profilers  
Identifying MIEs

### *In Chemico*

Direct Peptide  
Reactivity  
Assay  
Glutathione  
depletion

### *In Vitro*

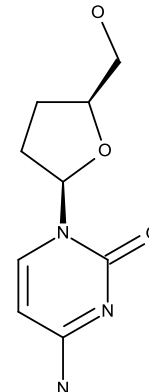
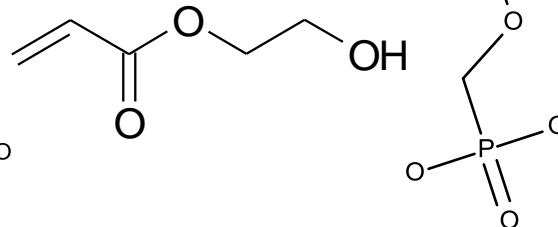
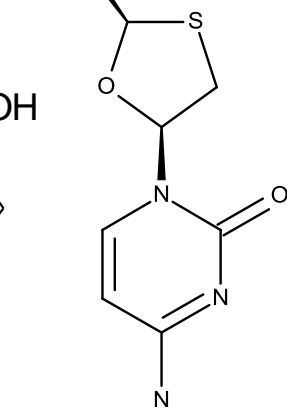
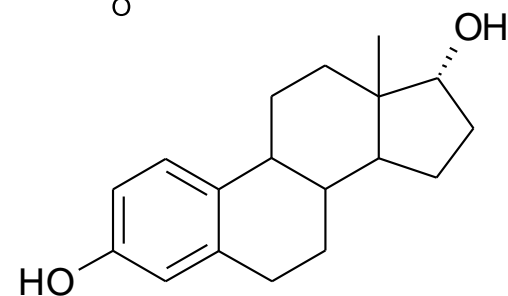
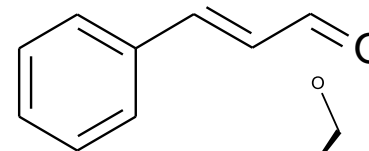
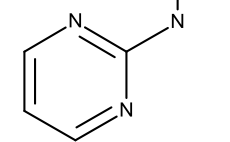
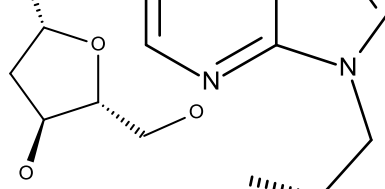
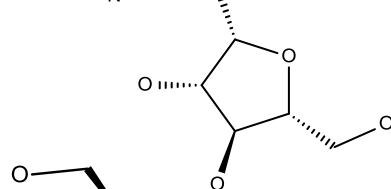
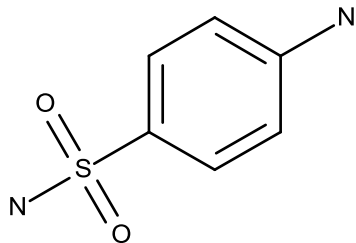
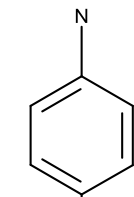
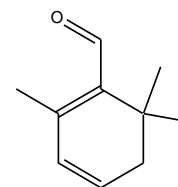
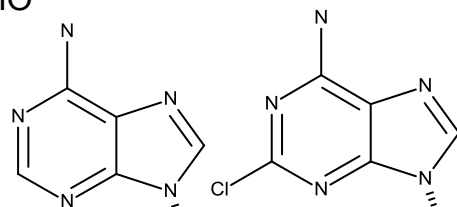
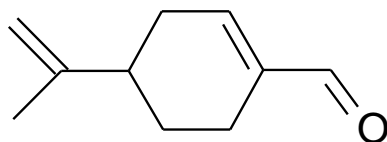
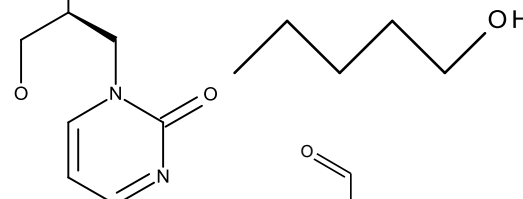
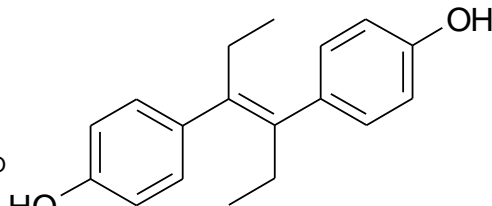
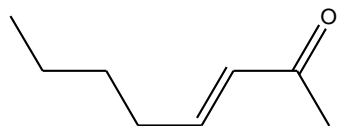
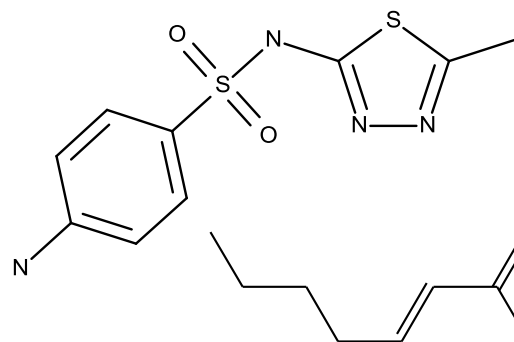
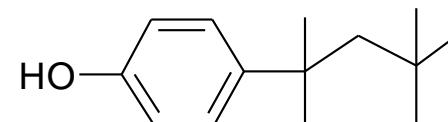
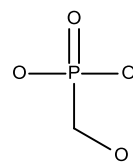
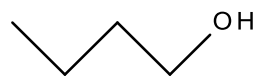
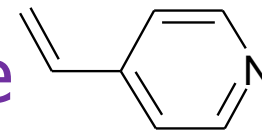
MUSST/h-CLAT  
Ames Test  
Mitochondrial  
Damage  
Oxidative Stress

### *In Vivo*

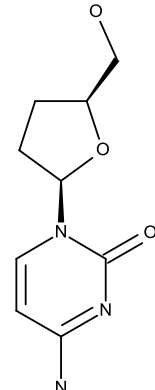
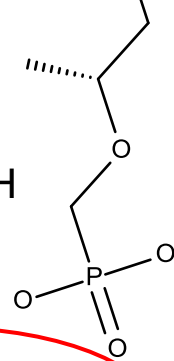
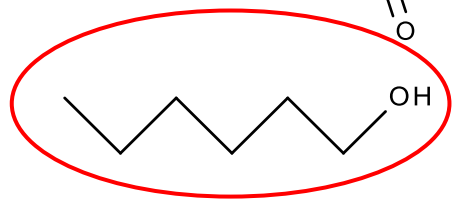
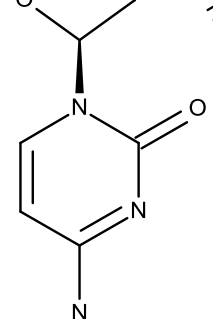
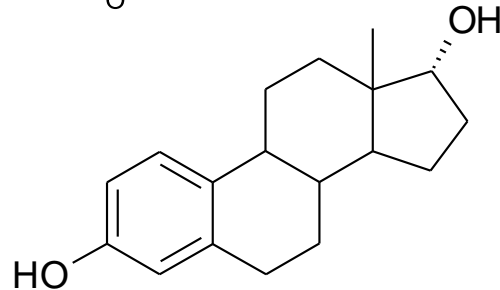
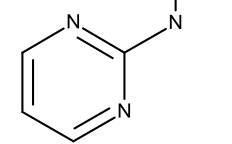
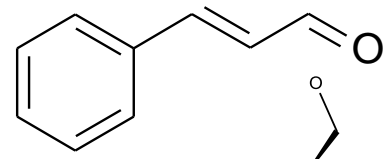
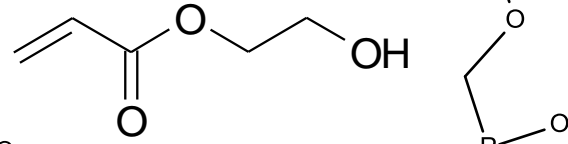
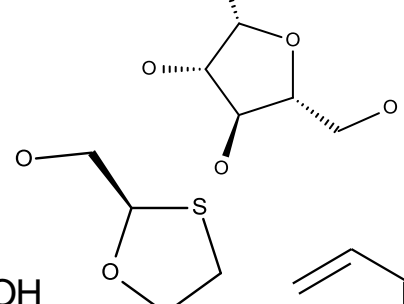
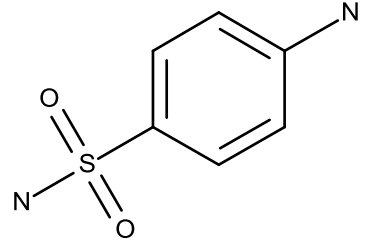
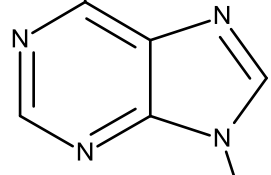
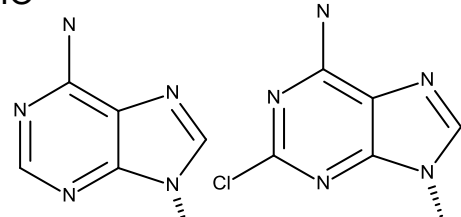
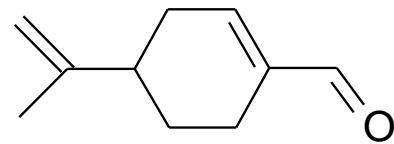
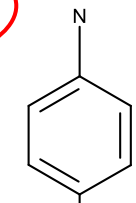
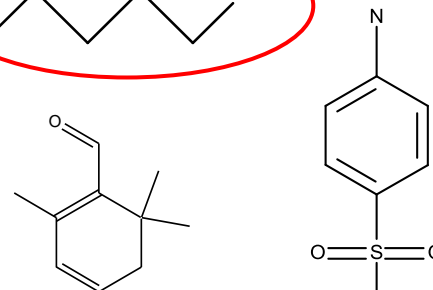
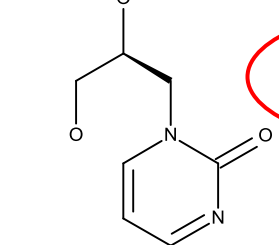
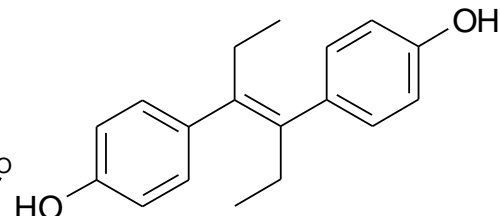
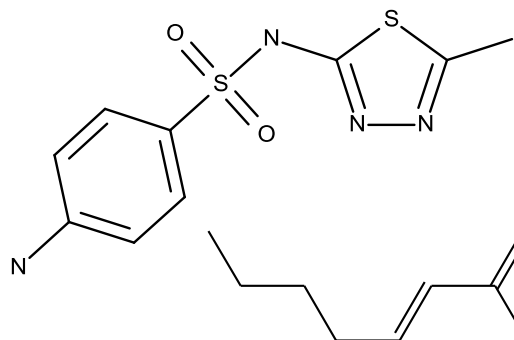
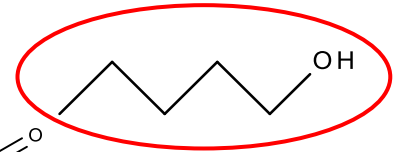
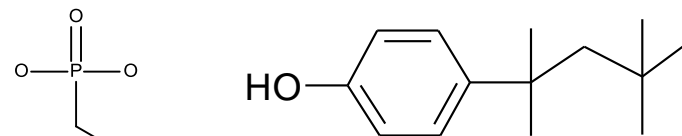
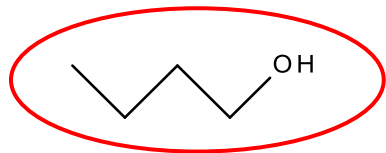
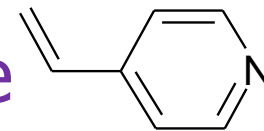
GPMT  
LLNA  
Human Patch  
Test  
Toxicity Assays

- Capturing the chemistry underlying an MIE can be used to develop Structural Alerts / Profilers for **grouping** chemicals into categories

# Identifying Groups in Chemical Space

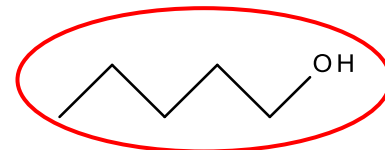
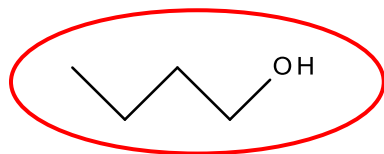


# Identifying Groups in Chemical Space

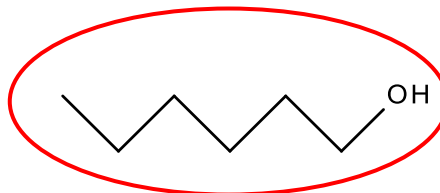




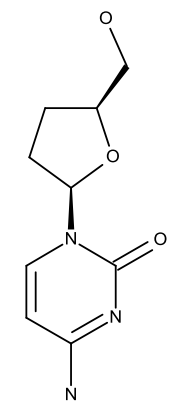
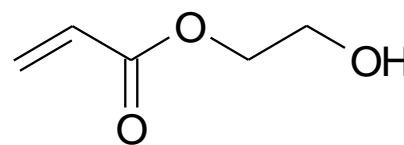
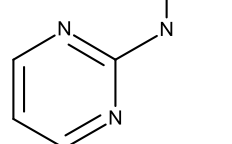
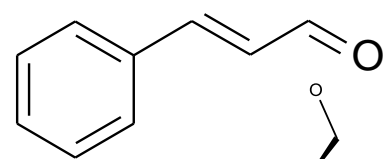
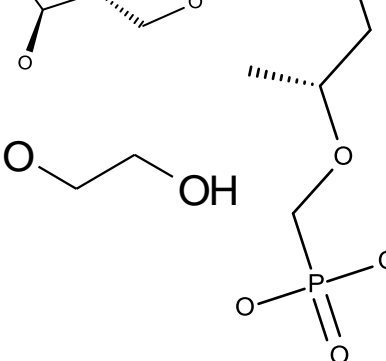
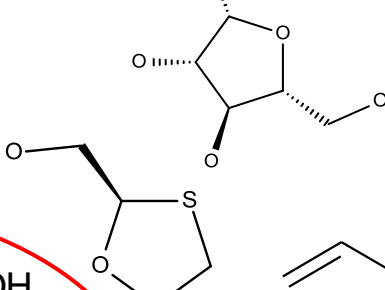
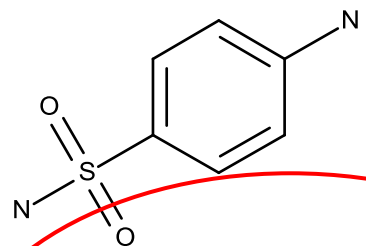
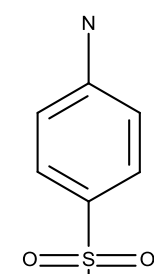
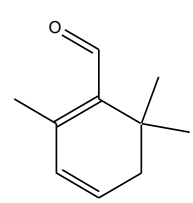
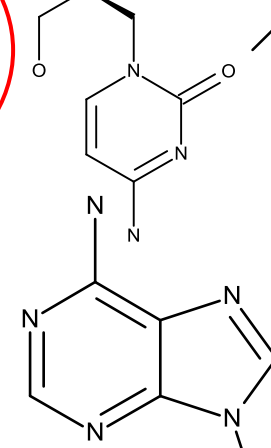
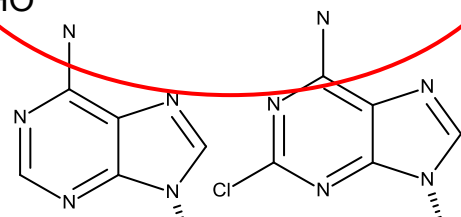
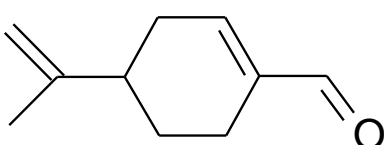
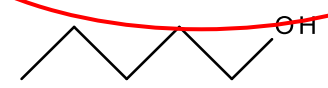
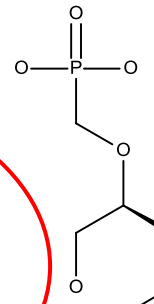
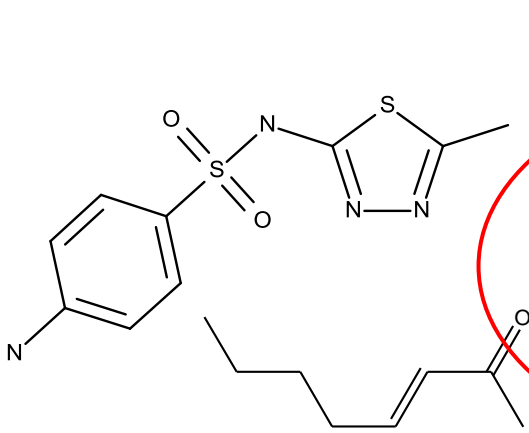
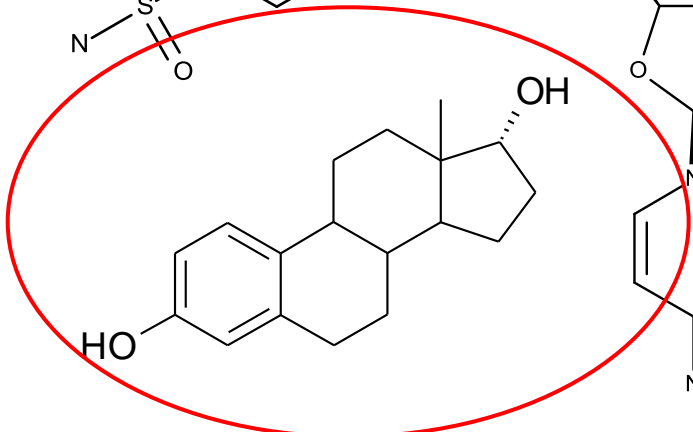
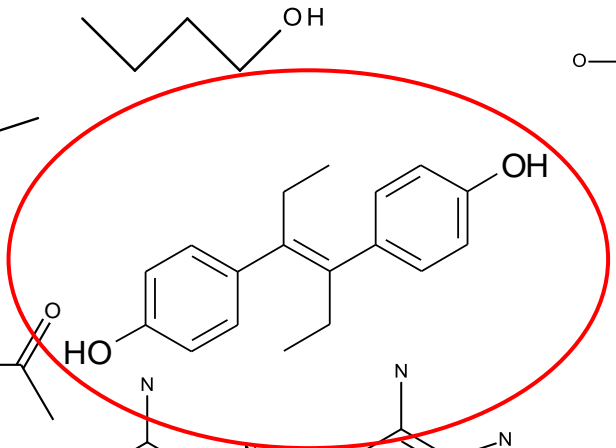
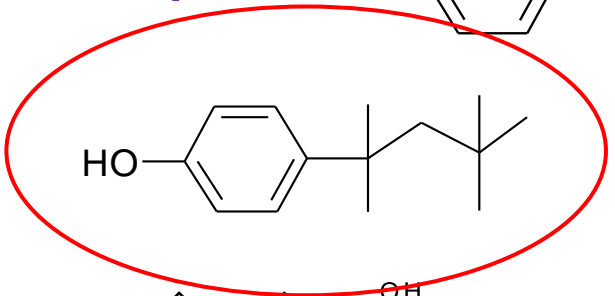
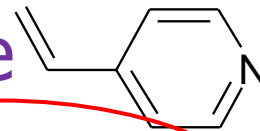
# Identifying Groups in Chemical Space



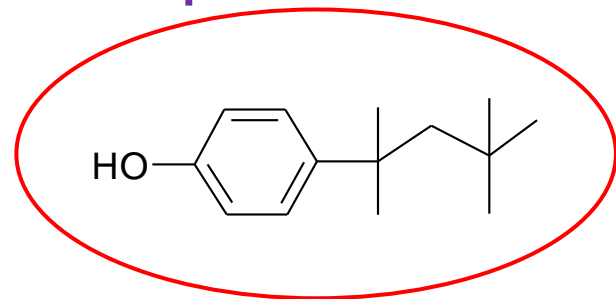
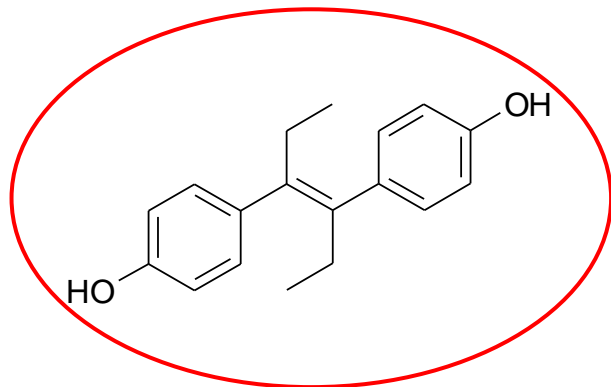
Structural Analogues



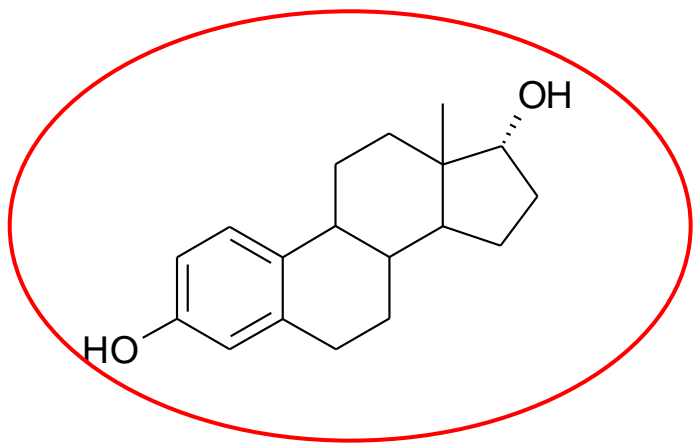
# Identifying Groups in Chemical Space



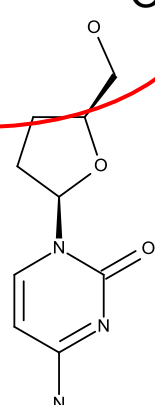
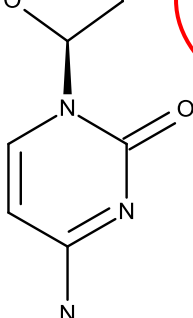
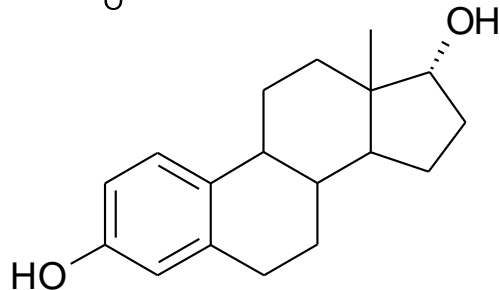
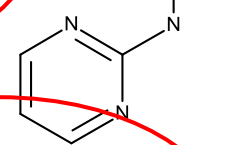
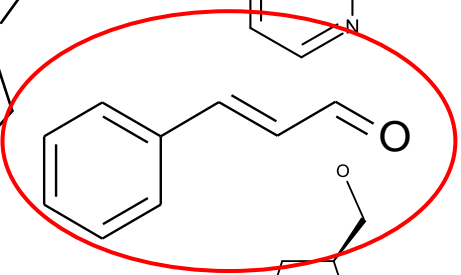
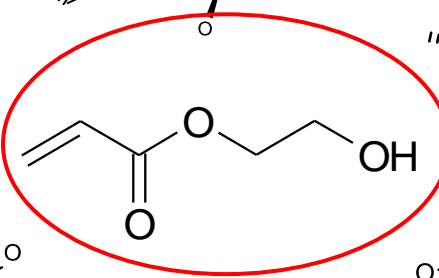
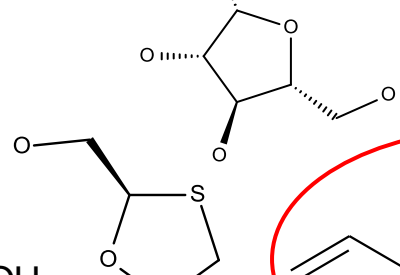
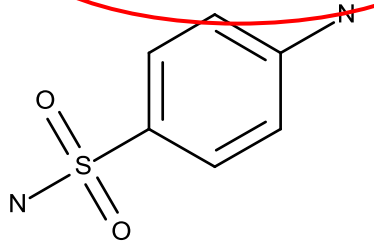
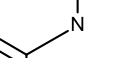
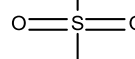
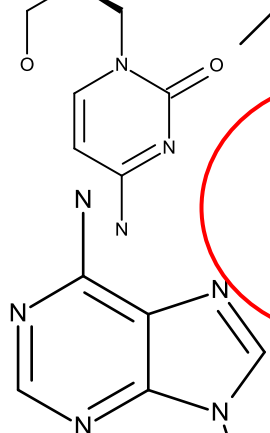
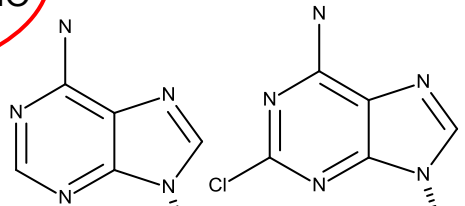
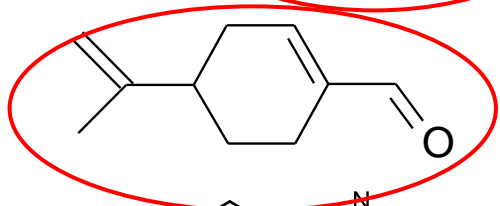
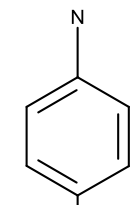
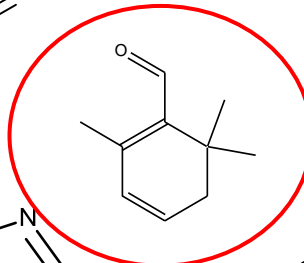
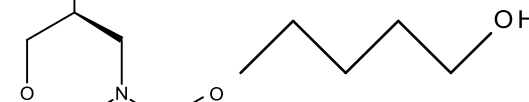
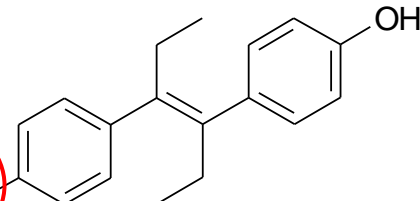
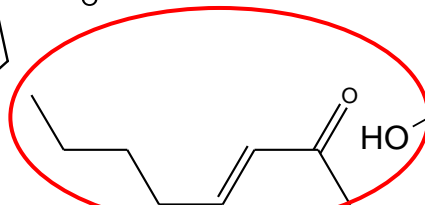
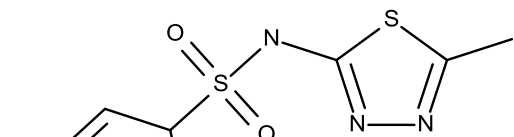
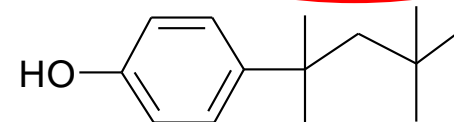
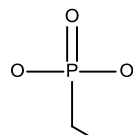
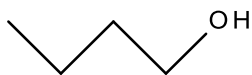
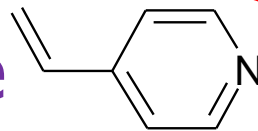
# Identifying Groups in Chemical Space



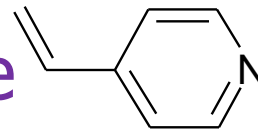
Mode of Action Analogues  
(Binding to oestrogen receptor)



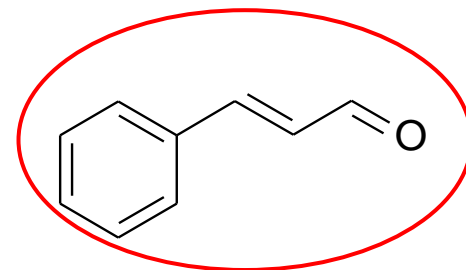
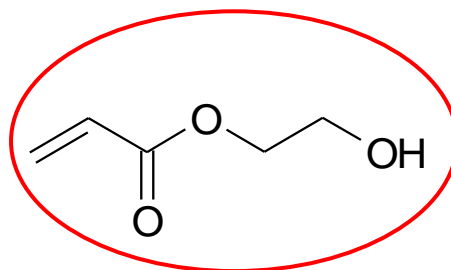
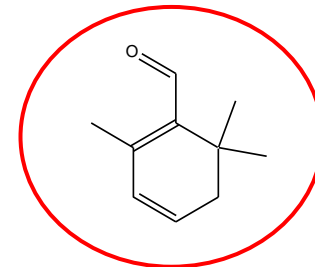
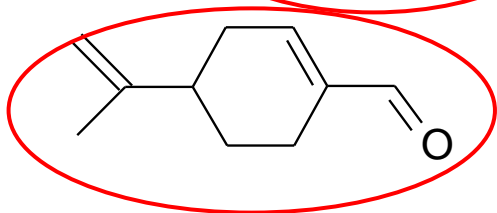
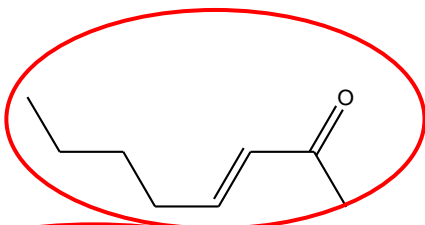
# Identifying Groups in Chemical Space



# Identifying Groups in Chemical Space



Mechanistic analogues  
(Michael addition reaction)



# Mechanistic Structural Alerts and Profilers Developed:

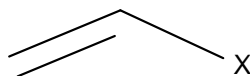
## Protein binding relating to skin & respiratory sensitisation

Use knowledge of mechanistic chemistry domain e.g.

Acylation

Schiff Base Formation

**Michael Addition**<sup>s>r</sup> → Mechanistic Alert: (e.g. polarised alkenes) → Structural Alerts: e.g.  $\alpha,\beta$  unsaturated aldehydes, ketones, amides



104 structural alerts developed for protein binding (46 associated with skin sensitisation)<sup>2</sup>; 52 structural alerts for respiratory sensitisation

Also 57 structural alerts developed for DNA binding<sup>2</sup>

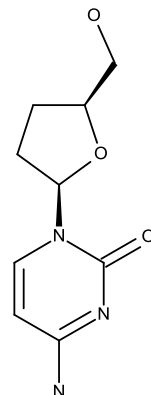
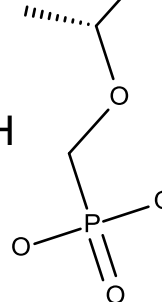
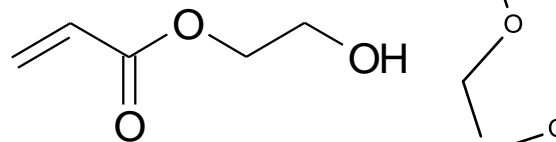
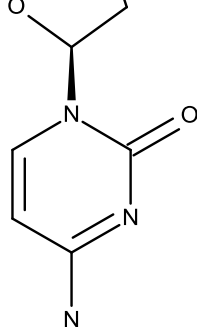
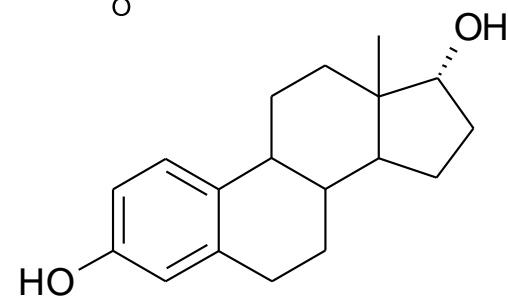
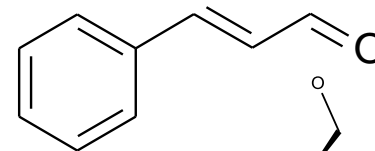
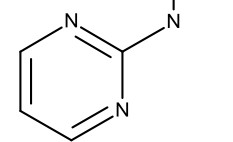
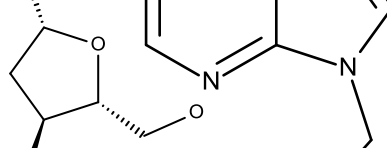
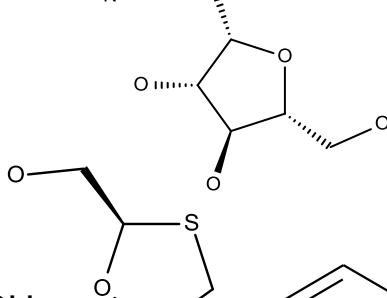
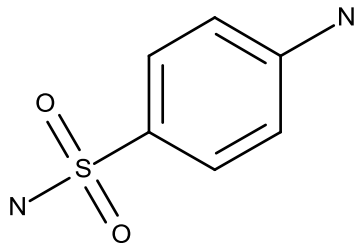
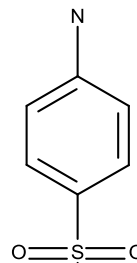
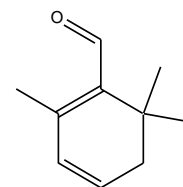
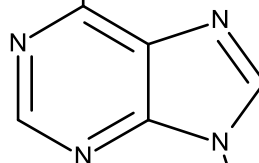
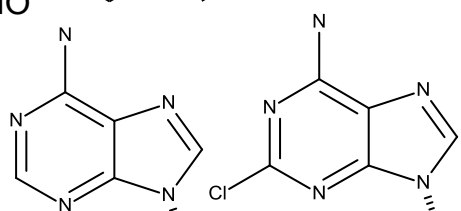
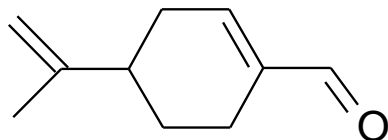
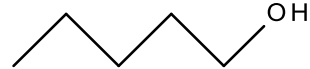
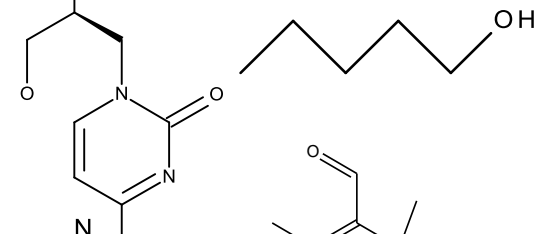
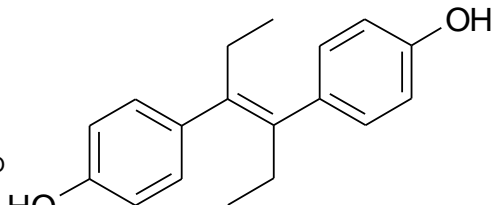
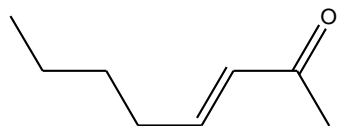
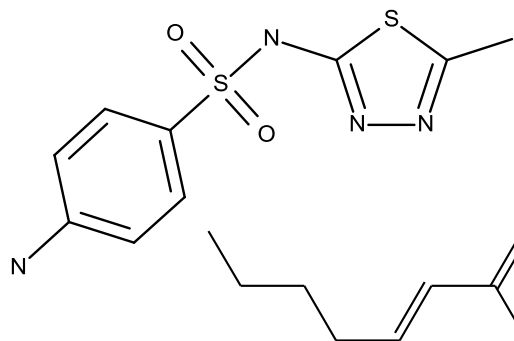
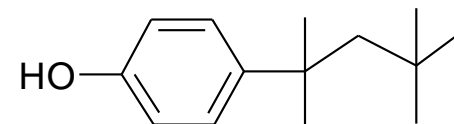
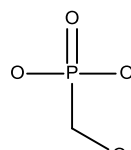
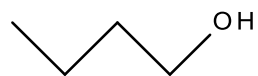
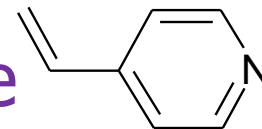
Derive associated SMARTS<sup>1</sup> patterns (e.g. CC=OC; C=NCCR)

Encode into profilers

<sup>1</sup> freely available – also encoded in KNIME workflows

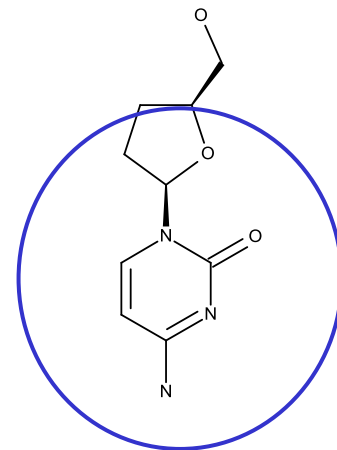
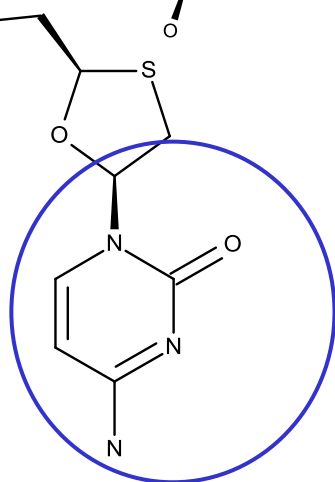
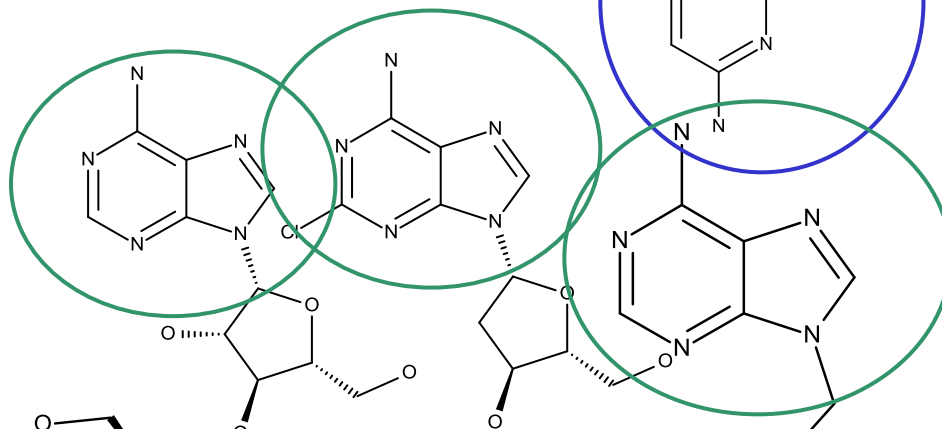
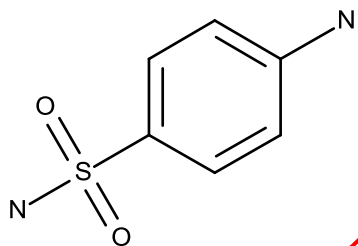
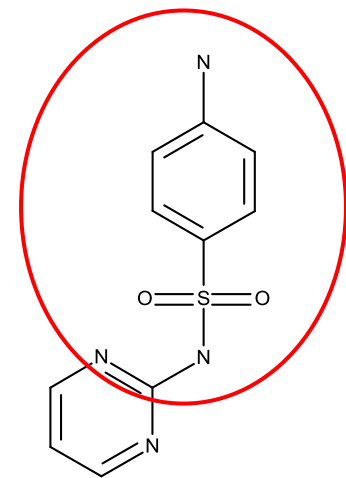
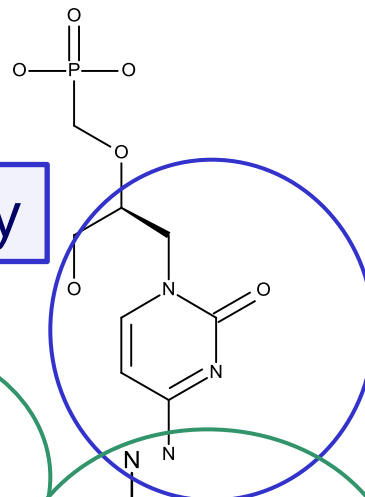
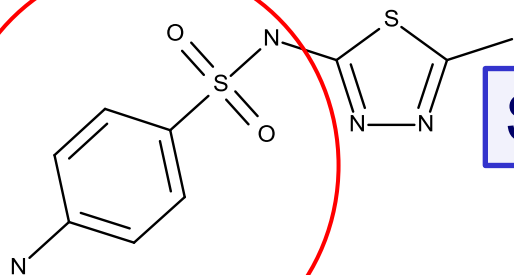
<sup>2</sup> available in OECD QSAR Toolbox;

# Identifying Groups in Chemical Space



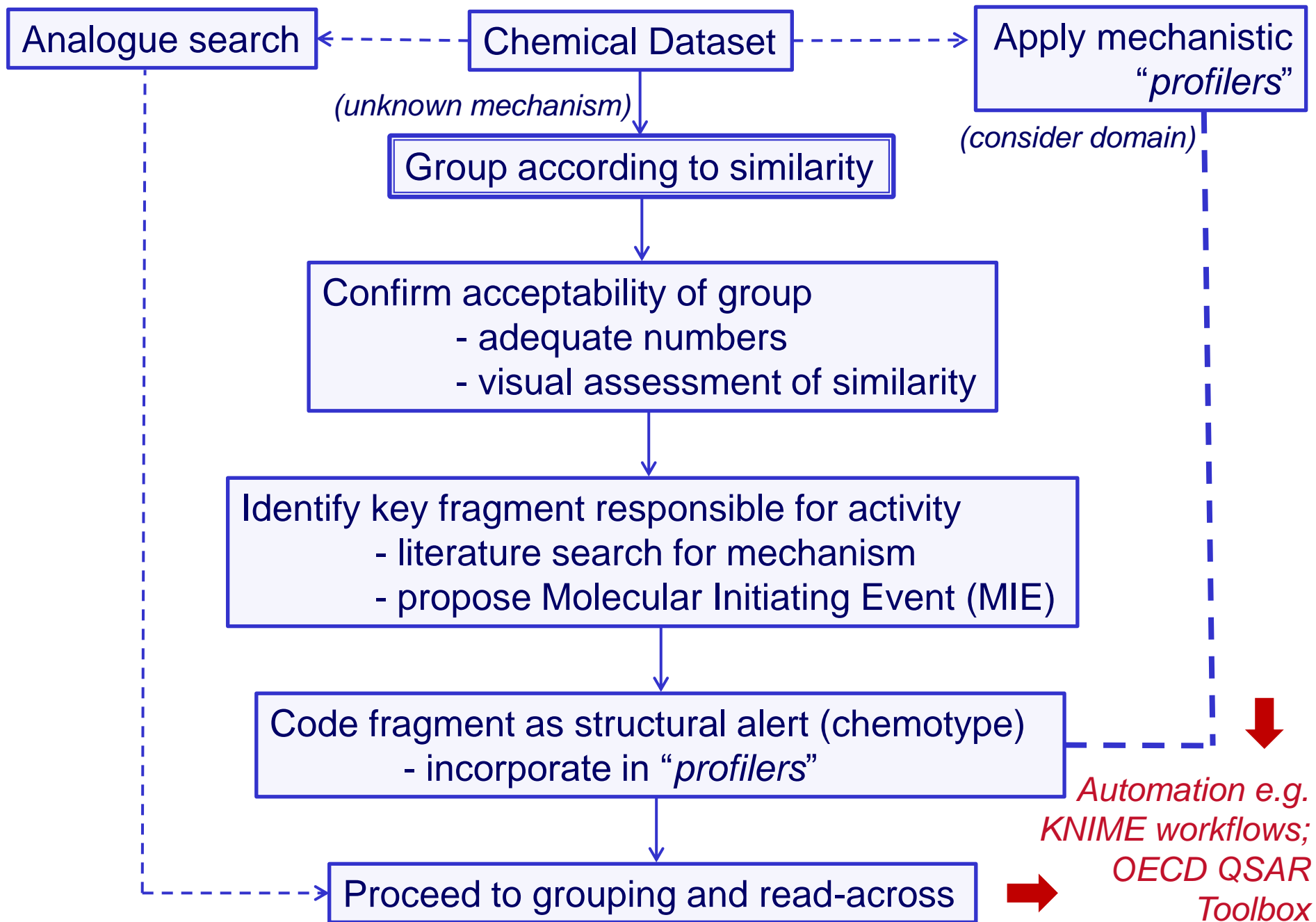
# Identifying Groups in Chemical Space

Structural Similarity





# Grouping Chemicals for Read-Across



# Structural Alerts for Hepatotoxicity

951 compound dataset\* (650 +ve)

Grouped by structural similarity  
- using Toxmatch software

Group (category) acceptable if:  
contained  $\geq 6$  compounds  
*and* similarity index  $\geq 0.6$   
*and* visually appeared similar

Alerts used to re-screen dataset  
↑ no. category members

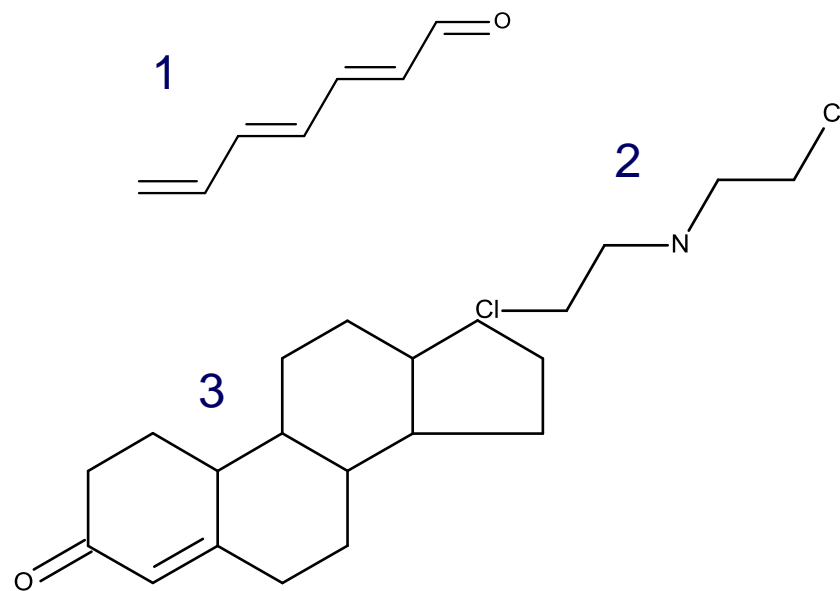
Literature search for putative  
mechanisms of toxicity

**Mechanisms proposed for ~25% of  
hepatotoxicants in dataset**

## Example SMARTS Patterns

1. C=CC=CC=CC=O
2. C1CCNCCCC1
3. O=C1CCC2C3CCC4CCCC4C3CCC2=C1

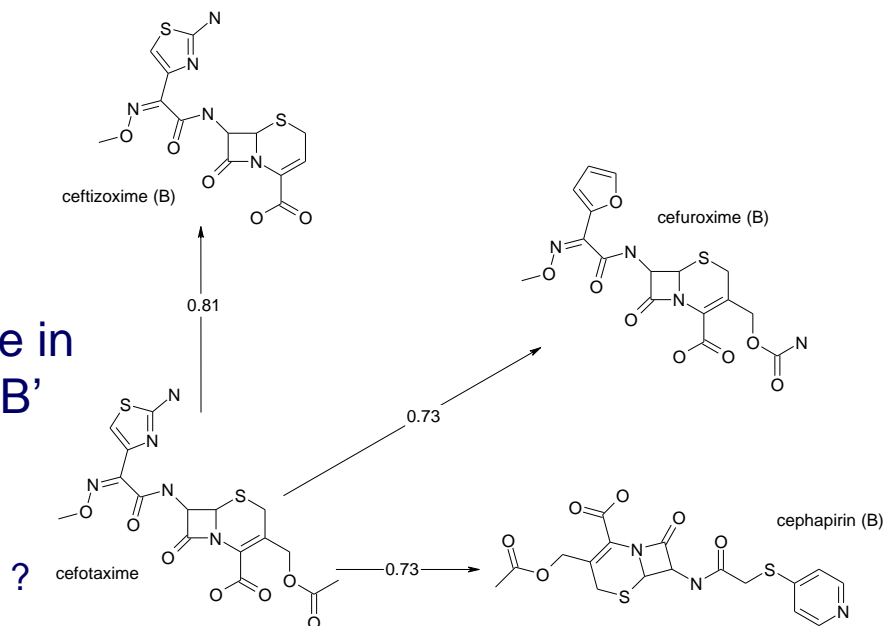
**16 structural alerts#  
(key fragments) identified**



# Using the Information to Predict Toxicity

- Profilers can be used to form groups of compounds (categories)
- Structural or mechanistic knowledge of category members can be used to infer information concerning an (unknown) compound of interest i.e. a read-across prediction

Cefotaxime  
predicted to be in  
toxicity class 'B'



- Enables transparent, justifiable predictions to be made

# Tools for Category Formation & Read-Across: OECD QSAR Toolbox



Input query chemical

**Profile (identify key features)**

Gather endpoint information

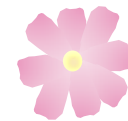
Develop and refine category

Use compounds of known activity to fill data gap

Produce report


Profilers:  
Mechanistic  
Empiric  
Toxicological  
Endpoint specific  
or by affiliation

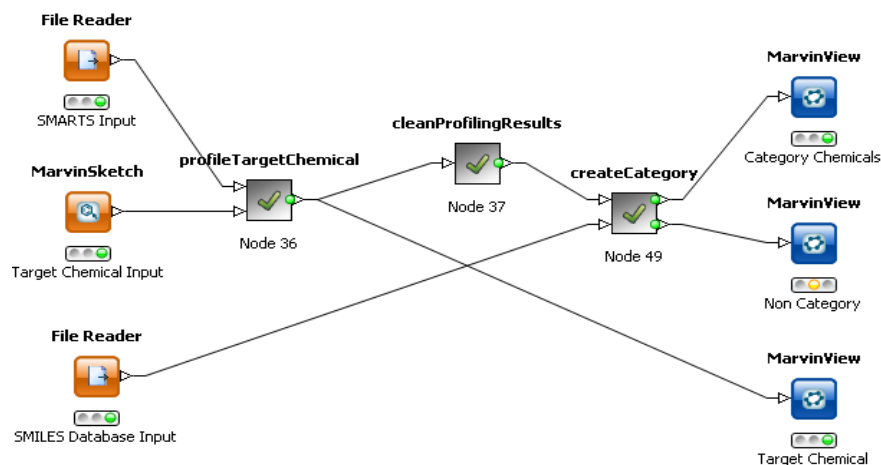
*Under further  
development...*



# The COSMOS Project

Integrated *in silico* models for the prediction of repeated dose toxicity of **COSM**etics to **O**ptimise **S**afety

- Developing tools for predicting repeat dose toxicity
  - database of relevant toxicity & ADME data
  - building (Q)SARs
  - identifying structural alerts – creating profilers for category formation
- Freely available as KNIME workflows 



[www.cosmostox.eu](http://www.cosmostox.eu)

# Conclusions and Outlook

- AOPs provide a framework for organising information
  - The MIE is a key event (⚓) in an AOP
- Understanding mechanistic chemistry enables structural alerts / profilers to be built associated with an MIE
- Categories (groups) can be based on structural similarity & potential mechanisms investigated
- Literature or experimental evidence provides support for AOPs
  - Link *in silico* investigation to directed *in vitro* analysis
    - Confirmation of effects; defining chemical space of alert
- Improvements needed in tools to capture and use information
  - Toolbox; Effectopedia
  - Mitigating factors need to be considered
  - More quantitative predictions in future

**Category formation (grouping) & read-across provide more transparent, acceptable methods of predicting toxicity**

# Acknowledgements

## Staff

*Mark Cronin*

*Steve Enoch*

*Andrea-Nicole Richarz*

*Katarzyna Przybylak*

*Mark Hewitt*

*Mark Nelms*

*Fabian Steinmetz*

*Przymyslaw Piechota*

## Support

The logo for COSMOS, featuring the word "COSMOS" in a bold, black, sans-serif font. The letter "O" is replaced by a stylized pink flower with five petals and a yellow center.

The logo for QSAR TOOLBOX, with "QSAR" in a grey, sans-serif font and "TOOLBOX" in a blue, sans-serif font.

The logo for eTOX, with "e" in green and "TOX" in purple, all in a sans-serif font. A green arrow points from the "e" towards the "O".

The funding from the European Community's Seventh Framework Program (FP7/2007-2013) COSMOS Project under grant agreement n°266835 and from Cosmetics Europe is gratefully acknowledged.. Funding from the eTOX project, grant agreement no. 115002 under the Innovative Medicines Initiative Joint Undertaking (IMI-JU) is also gratefully acknowledged.

***Thank you for your attention!***